

Partial Placement Diagram at 100% scale

Required Glass Pieces

- 36 Short Petals
- 36 Long Petals
- 5" circle of glass
- 2 oz. of mosaic size frit
- 2 oz. of medium grain frit

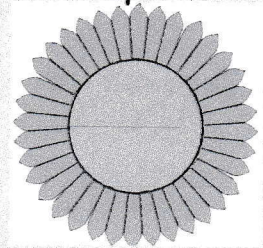
Mold Used GM75

Short Petal

Long Petal

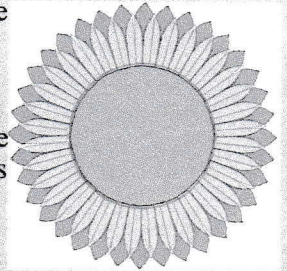
Placement Step One

Arrange the 36 Long Petals around the perimeter of the 5" circle.



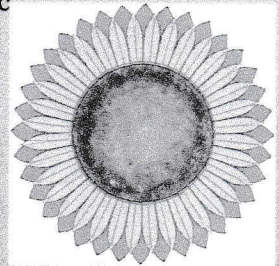
Placement Step Two

Arrange the 36 Short Petals on the seam between the Long Petals and 1/8" over the the edge of the circle.



Placement Step Three

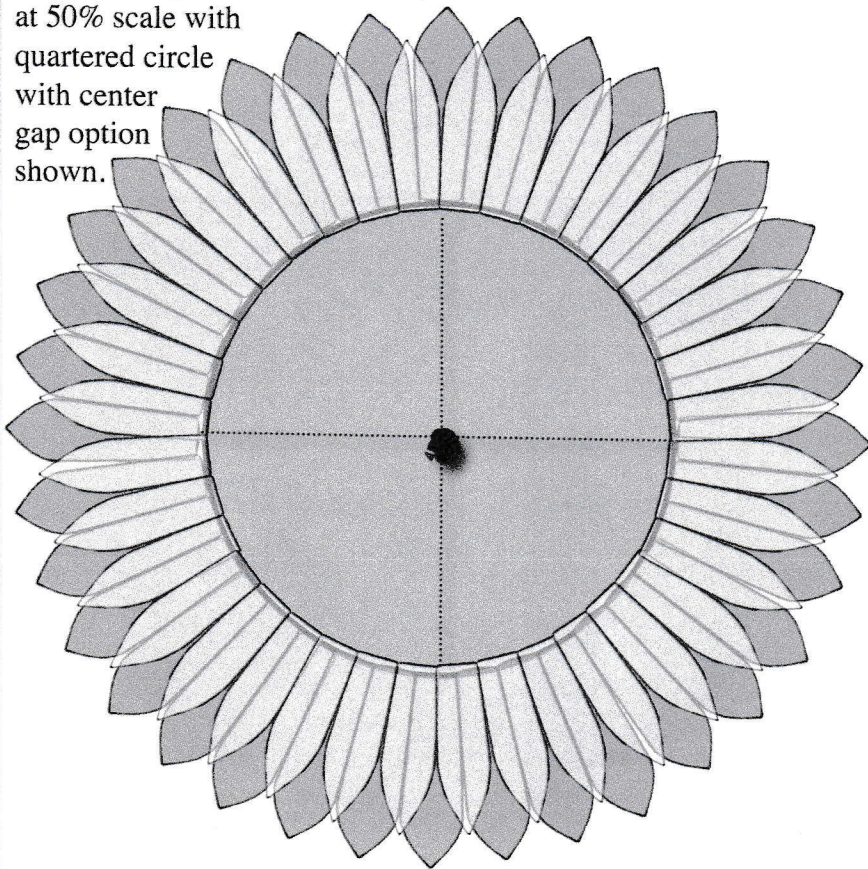
Place mosaic size frit along the outer edge of the circle and randomly over the ends of the short petals.



Fill the center of the circle with medium grain frit.

For tips on placing this flower on a stem, see page 41

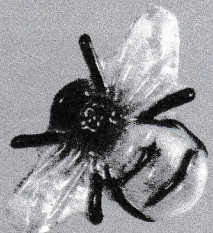
Diagram of petals and circle in place at 50% scale with quartered circle with center gap option shown.



To create a sunflower with a hole fused into the glass, cut the 5" circle into 4 equal pieces (quarter circles) and use a mosaic nipper to nip 1/4" of the end point of each quarter circle. Place the circle back together and fill the void in the center with fiber paper and proceed with construction from Placement Step One. Be sure to cover the seams in the circle with frit.

To create an iridized sunflower, as shown in Fig. 15 on page 4, cut the circle and petals from iridized glass and place all of the iridized surfaces facing up away from the kiln shelf.

A frit cast bee can be used to hide the screw in the center of the sunflower. LF145 by Creative Paradise, Inc. was used to cast the Bee seen in Fig. 31 on page 7 and a free tutorial is available at CREATIVEPARADISEGLASS.COM on the tutorial page.



Fire the constructed glass flower to a contour fuse. A suggested firing schedule can be found in Table 1 on page 38. Slump the fused glass on mold GM75 using the suggested firing schedule found in Table 3 on page 38.