

LF223 Lily Tutorial

Materials:

Creative Paradise Inc.

[LF223 Lily Mold](#)

[GM50 Cone Former Mold](#)

COE96 Frit: F1 Powder Moss Green, F1 Powder Mauve, F1 Powder Plum, F2 Fine Champagne Opal.

Ear Wax Vacuum

Powder Sifter



Sift F1 Moss Green into the center of the cavity placing the Moss Green frit up each petal about 1 inch.



Sift F1 Mauve into the cavity from the edge of the Moss up each petal stopping at 1" from the tip of each petal.

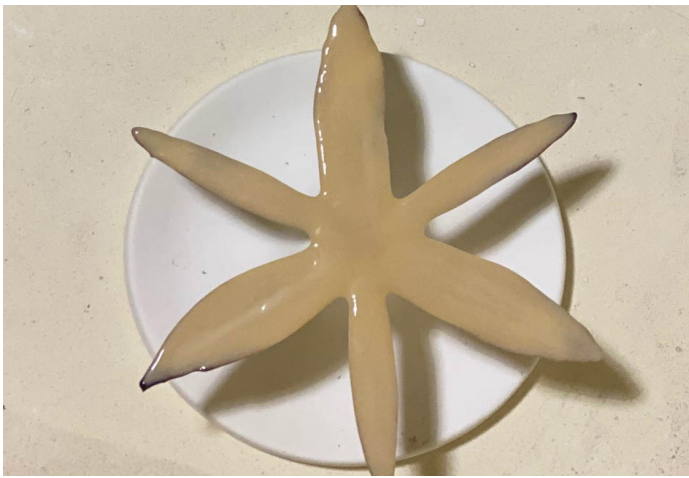


Sift F1 Plum into the tip of each petal and along the edge of the top of the petals.



Place F2 Champagne Opal over the entire cavity until the mold is holding 100 grams of frit (or approximately 3/8" of frit). Fire the project to a tack fire. A suggested schedule can be found in Table 1.

Creative Paradise Inc.



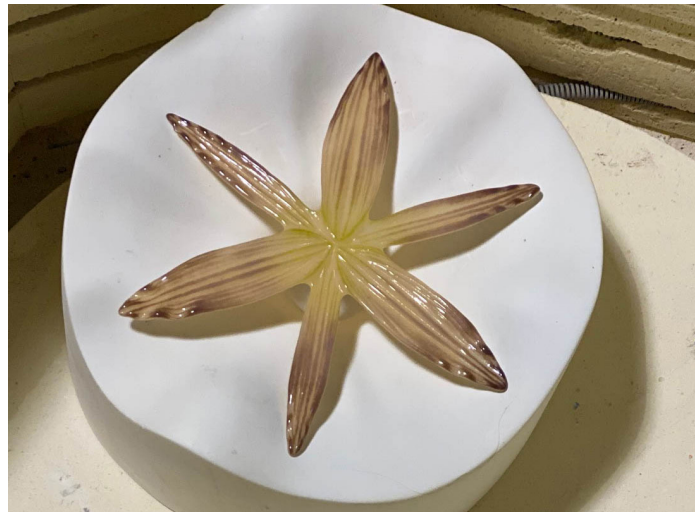
After the project is cooled, Place the glass Lily on to a GM50 with the textured/colorful side down and with the flower centered on the mold (see pic above). Slump the project using the suggested schedule found in Table 2.

Table 1- Tack Fire			
Segment	Rate	Temp	Hold
1	300	1150	30
2	350	1420	10
3	9999	950	60

Table 2- Slump			
Segment	Rate	Temp	Hold
1	250	1250*	10
2	9999	950	60



We have a wide variety of slumping molds that you can slump the Lily on such as the GM195, however you will need to place the Lily texture side up on this particular mold when slumping (see image below). *You may also want to increase the top temp in Table 2 to 1300 if you want a deeper slump for your Lily on the GM195. (But do not increase this temp if you are slumping on the GM50).



[Click on this link to be taken to our tutorial for stemming fused glass flowers.](#)

Creative Paradise Inc. ★

Orange Lily pictured was slumped on GM195.