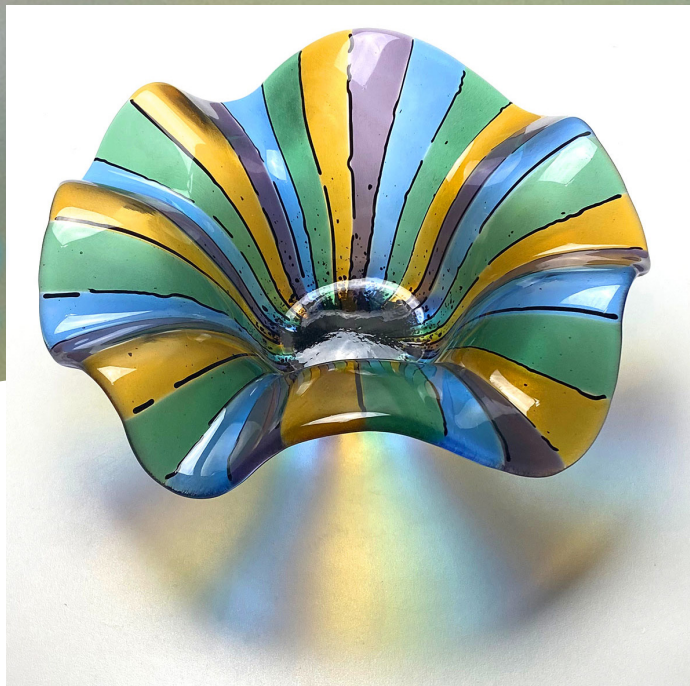


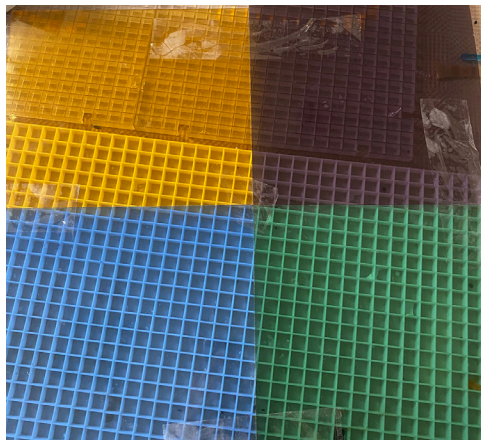
Creative Paradise Inc.

Burst of Color Bowl

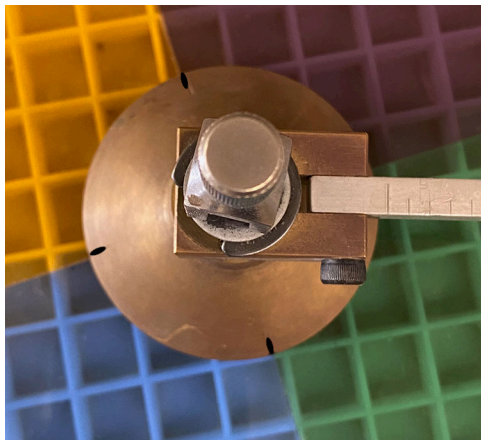
Materials: GM192 XL Organic Slump, Suitable Glass Separator, Kiln Shelf Paper, Glass Cutting Tools, Straight Edge, Liquid Hair Spray, Marker, 13" Circle of Standard Clear COE 96, 8" Squares Each of Sea Green, Pale Blue, Pale Amber and Light Grape Transparent Sheet Glass COE 96, Black Stringers, F3 Black Frit COE 96



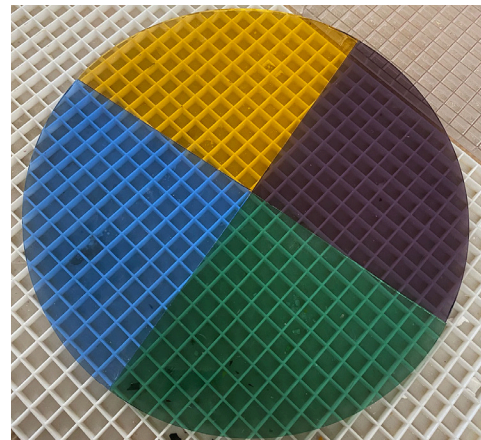
www.creativeparadiseglass.com



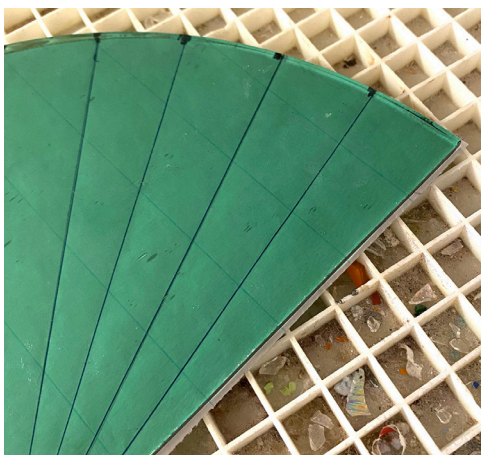
Align the four 8" squares of Pale Amber, Light Grape, Sea Green, Pale Blue transparent glass in a grid as shown. To keep the squares in place, tape the center and the edges where the squares meet.



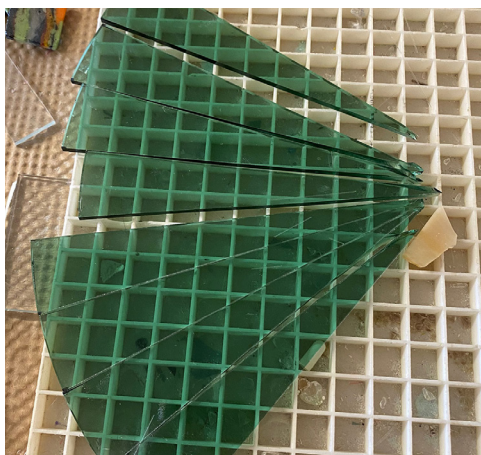
Place a circle cutter set to cut a 12.75" circle on the glass such that the marks on the suction cup are over the seams between the glass colors. Hold the center of the circle cutter tightly in place and



score a quarter circle on each color of glass. Break the edges away to create a 12.75" circle of 4 equal parts of each color.



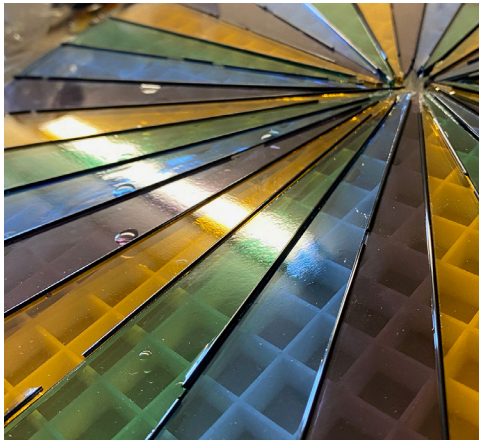
Use Pattern 1 and a marker to mark each quarter circle into 8 equal parts. Use a straight edge to score from the outside mark to the point of the quarter circle. Begin with the center line and break it away to create two pieces and then score



the center of the two pieces to yield 4 pieces and the center of those 4 to yield 8 equal pieces of each quarter circle. The result should be 32 pieces of glass (8 each of the four different colors).



Cut a 13" circle of Standard Clear. Begin to arrange the 32 sections of glass in a Light Grape-Pale Blue-Sea Green-Pale Amber sequence as shown. There will be a bit of a void in the center where the transparent color pieces will meet.



Place Black Stringers in the gap between each of the 32 wedges. Use a bit of liquid hair spray or other fusible adhesive to keep the stringers and glass pieces in place. Broken stringer pieces can add a quirky effect if used. Fill the center area with F3 Black Frit. Sprinkle



a bit of the Black frit here and there onto the transparent colors. Place the project on a 14" circle of kiln shelf paper on a level kiln shelf in a kiln and fire to a full fuse. A suggested schedule can be found in Table 1.



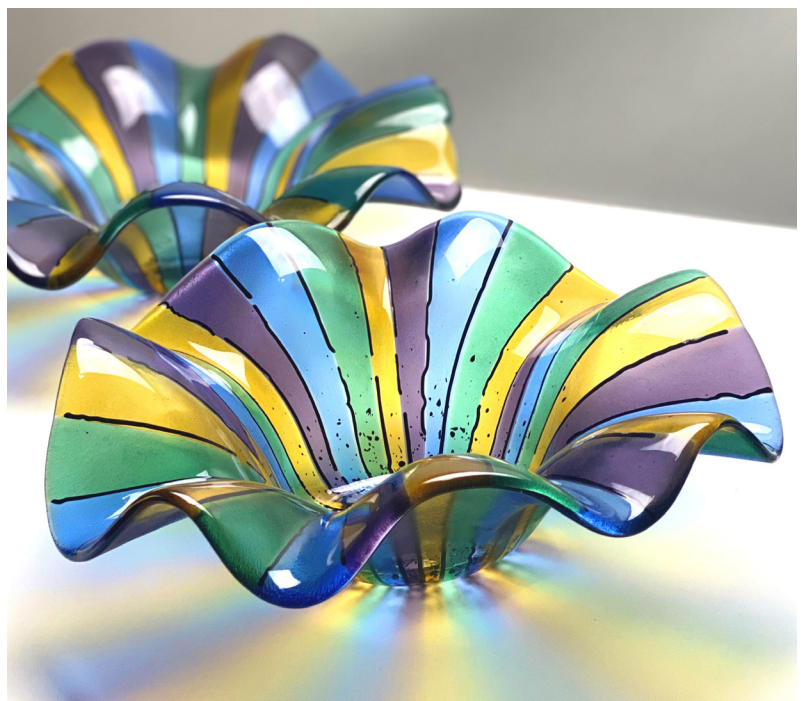
The above image is a picture of the glass after it is fused.



Clean the glass of any residual glass separator and place the glass on a GM192 that has been treated with glass separator. Place the mold on a level kiln shelf and fire using the slump schedule found in Table 2.

Segment	Rate	Temp	Hold
1	300	1150	45
2	50	1300	20
3	350	1460	10
4	9999	950	90

Segment	Rate	Temp	Hold
1	300	1250	30
2	350	1300	10
3	9999	950	90



A special note of thanks and appreciation to Robert Kent of Wichita, KS for his participation in this project.

Helpful Tips

- It may be necessary to adjust the firing schedules found in this tutorial if the kiln that is going to be used fires differently than predicted. Test tiles are a great way to get to know a kiln. For tips on this see [IMPORTANT FIRING NOTES FLYER](#)
- The Black Stringers added to this project were meant to wiggle and were not meant to be perfectly straight after firing. If you prefer perfectly straight stringers, use unbroken stringers and fuse the project with the solid piece of glass on top.

